



Integration guide for applications



mylogin

Simplified student logins

Simplifying the login process for schools, to enhance learning and use of resources.

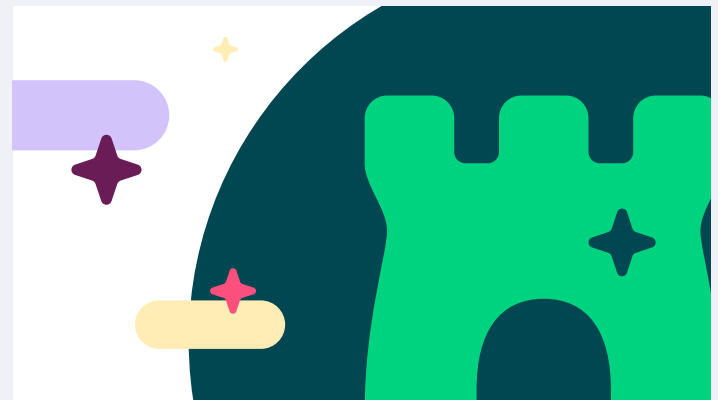
MyLogin provides students and teachers an innovative way of logging in to classroom apps at school and home; without the requirement of remembering complicated usernames or passwords. With one simple password, users can access all their apps from any device, anywhere.

We want to ensure MyLogin provides your schools with the best single sign-on experience and we'd like to invite you to be part of this solution.

Why MyLogin?

We do the admin

The process of onboarding new schools requires the distribution of a large number of login details to students, teachers and parents. With MyLogin, this administrative burden is fully managed by us. We distribute all credentials across multiple users so your schools only have to maintain a single password to access all their EdTech products.



It easy to get started

MyLogin works perfectly with the technology schools already use. It seamlessly connects with Google and Microsoft, making it simple and fast for schools to get started. And because the single sign-on feature is free to use, it's even easier to adopt.

It provides access to schools

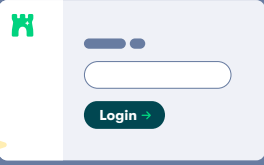
The App Directory will feature on MyLogin and compliant applications will be highlighted providing direct connection ability to up to **28,000 schools** currently using Wonde.



How to get started

Integration with MyLogin couldn't be easier


1



Log in to your MyLogin account, using the email you use to login to your Wonde account.


[Get started →](#)

2




Our **developer docs** are ready to help your team get started.

3



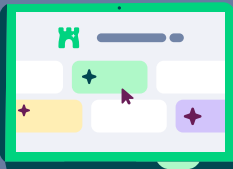
Your developers should be able to match MyLogin users to existing accounts in your app by using the Wonde, Google or Microsoft ID.

4

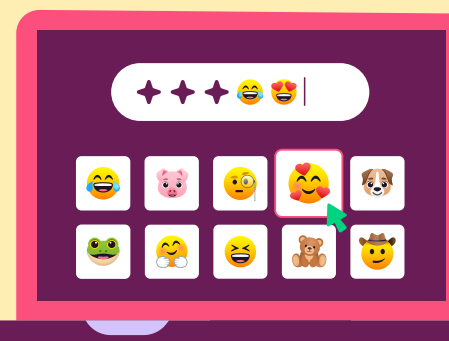


Test everything is working correctly with our handy demo school

5



Once approved you will feature in our App Directory, accessible to **over 28,000 schools!**



Now all our MyLogin integrated schools can add your app from our app directory and access quick, simple and safe login to your app using MyLogin.